

Fall 2010



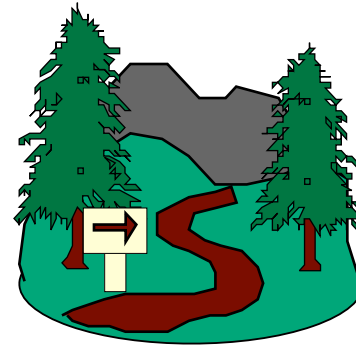
## Places for Pastors and Families to REST!

*Jesus said to them,  
“Come with me by yourselves  
to a quiet place and get some rest.”*

*-Mark 6:31*

*Please note: While I've personally contacted many of these places, some I've discovered on the web. If you find some of the information incorrect or outdated, or you find something that should be added to the list, please let me know.*

*- Pam Braman*



*Jesus said to them, "Come with me  
by yourselves to a quiet place  
and get some rest." -Mark 6:31*



*In the following pages you will find places for  
you, as a pastor, and your family to rest.  
Some are free, some charge. Some are spots  
for vacation, some for Sabbath rest, others are  
places of prayer. Some invite your spouse,  
some your children, others are for the pastor  
alone. Some offer counseling or spiritual  
direction. No matter where you go,  
remember: Jesus invites us to get away with  
him for rest. It's His gift...*

## **FREE for Pastors:**

A Quiet Place

[www.aqpretreat.org](http://www.aqpretreat.org)

Bryantsville, KY

Surrounded by 100 acres of timber & rolling hills, the log home located near Lancaster, Kentucky, provides a peaceful setting for guests to experience rest and renewal. The five-day sabbatical retreat, beginning Sunday evening and continuing through Friday morning, is offered free of charge. Includes: Meals, quiet time, as well as time to talk with other pastors.

The Braman's

Eagan, MN

(651-994-1928)

Marshal & Pam Braman have a small "apartment" in their walk-out basement, which includes a bedroom (queen size bed), bathroom, and small kitchen / living area. When no one is living there, it's open for NCC pastors & spouses to come for a get-away. The home is on a small lake, in the woods (lots of wildlife), but is only 10 minutes from the Mall of America.

The Brook at Bethpage

Bethpage, MO

<http://www.brookathethpage.com>

Located on 100 acres in the Ozark Hill County of southwest Missouri is a 2 bedroom, 2 bath cottage on a lake, available for pastors & families as a place of rest. No charge. A four bedroom, 2 bath home with a heated pool is also available on a limited basis.

### Broom Tree Ministries

[www.broomtreeministries.org](http://www.broomtreeministries.org)

Provides free (food and lodging) 5-day Spiritual Retreats for full-time Christian pastors and spouses. Retreat agenda is for participants to spend blocks of time alone with God in prayer, rest, Bible study, reading, hiking, and lots of time with their spouse. Pastors set their own daily schedule. Retreat locations in Michigan and Wisconsin.

### Camp Lebanon

Upsala, MN

1-800-816-1502

[www.camplebanon.org](http://www.camplebanon.org)

Provides mid-week (Mon night thru Wed night) free personal retreats for pastors during the off-season, space permitting. "Hotel-style" rooms available, kitchenette nearby, cafe a few miles away. In the woods, on a lake.

### Deer Ridge Ministries

[www.deerridgeministries.org](http://www.deerridgeministries.org)

Located outside of Freeport, Illinois, at the Highpoint Inn. Program similar to Pastor's Retreat Network, and Broom Tree Ministries. One week, Sunday night thru Friday morning. Free, including lodging and meals.

### Elim Retreats

Phone: (262) 524-0167

E-mail: [hstewart5@juno.com](mailto:hstewart5@juno.com)

<http://www.barnabas.org/elimretreats>

Free renewal retreats for single and married full-time missionaries and pastors. Located on 1400 private

and secluded acres on Lake Huron's shore, in Michigan. Providing refreshment and renewal in the Lord, 6 day low-key continuing education opportunity.

### Innkeeper Ministries

<http://innkeeperministries.org>

Phone: 937-962-8312

Just outside of Lewisburg, Ohio.

Free Sabbath rest retreats for full time Christian workers and spouses. Most people come for 4 days, 3 nights, Monday thru Friday. Meals included. Longer stays, or weekend stays, without meals is another option in another facility.

### Living Waters Retreat Center

Cornville, AZ 86325

<http://www.livingwaterretreatcenter.com>

[information@livingwaterretreatcenter.com](mailto:information@livingwaterretreatcenter.com)

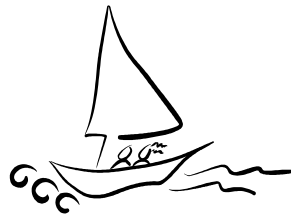
Phone: 1-866-856-2210 OR 928-634-4421

Pastors are invited to experience a complimentary personal retreat which includes:

- \* Two nights private accommodations (M-TH only)
- \* Five meals
- \* Personal retreat notebook



Mary's Place: Week long focus on prayer.  
www.marysplace.org  
Provides an all-expense paid week-long opportunity for pastors to "pray and think creatively about their personal life and ministry routine and develop a workable plan to reorient their daily schedule around ample time for prayer." There is a three-step process involved: Preparation, on-site experience, and then follow up. Mary's Place is near Bowling Green, Kentucky, and is a ministry of Doug and Margie Newton (Doug was editor of Light & Life magazine, and is now Sr. Pastor of the Greenville FMC).



*"Peace,*

*be still..."*

Quiet Place Ministries

Jackson, MI

<http://www.quietplaceministries.org>

517-817-1680

Rents bed & breakfasts, lodges, or camping facilities for pastors families who need a break but cannot afford it.

Rocky Mountain Renewal (formerly Triple Creek)

[www.rockymountainrenewal.org](http://www.rockymountainrenewal.org)

[info@rockymountainrenewal.org](mailto:info@rockymountainrenewal.org)

Provides free vacation homes for full-time evangelical pastors, missionaries, and their families. (If you are bi-vocational because your church cannot afford a full-time salary, but you are a senior pastor, call and discuss your ministry and financial situation with them). Once registered, they send you the key to the cabin you'll have. You are "on your own" for the time you are there... each cabin includes a kitchen. At the end of the time you need to clean the cabin.

Location: Rancho Mira Sol, CO. On 500 acres of land just 20 minutes from Durango, Colorado, near the San Juan National Forest. Durango feature the well-known Durango & Silverton narrow-gauge Railroad, quality restaurants & shopping, access to Durango Mountain Resort, Mesa Verde National Park & Colorado's most remote hunting & trout fishing. Contact Information: They generally book 3-4 months ahead. Call: (970) 259-7778.

Sky Lodge Christian Camp  
<http://www.skylodge.org>  
Our very own Sky Lodge sometimes has space available for NCC FMC pastors to get away. Call for info. (608) 297-2566.

### **Inexpensive & Subsidized place to get away:**

Allison Ranch Ministries Foundation  
<http://www.replace.com/allison>  
Reservations: Judy Rasmussen at the Thomas Foundation: 208-377-3005.  
Judy's email: [thomasfoundation@juno.com](mailto:thomasfoundation@juno.com)  
Located on the Salmon River deep in Idaho's Wilderness. Allison Ranch is a Private Spiritual Retreat developed by Harold and Phyllis Thomas. They invite those in full-time service to the Lord to be their guests. Dates are available May - September, Monday through Friday morning. Home cooked meals are provided. You reach Allison Ranch by chartered plane leaving from McCall, Idaho. This flight is paid by Allison Ranch.  
Cost for 4 days (for the entire family): \$200.

Barnabas Factor  
Tahoe City, CA  
<http://www.barnabasfactor.com>  
"Designed to encourage, empower, and equip pastors." This 3 bedroom, 2 bath cabin overlooking Lake Tahoe provides (up to) one week long retreats

for pastors and families (including bi-vocational). It is run by a local pastor, who helps pastors do some "preventative maintenance" through a 2-3 hour appointment during the week. July & August only.  
Cost: minimum \$375.

Beside Still Waters  
Anna Maria Island, FL  
<http://www.beside-stillwaters.org>  
877-608-0999  
This townhouse on an Island off the western coast of Florida is provided as a retreat center for pastors to rest and refocus. Free except for a \$85 - \$125 cleaning fee (based on number in family).

Buffalo Ridge Hospitality and Retreat Center  
Ottawa, KS  
785-746-5418  
<http://www.HisWayMinistries.org>  
Offering hospitality to pastors in need of rest. Cost: \$30 individual, \$45 couple, \$50 families per night, meals included. Camping \$10- \$20.

Canaan's Rest  
<http://www.canaansrest.org>  
Hackensack, MN  
Canaan's Rest is a contemplative retreat house for Pastors and other pilgrims to come for a time of quiet prayerful retreat, overlooking Mann Lake in Northern Minnesota. Most come for a night or two and meals are provided. Suggested donation: \$50 / night, meals included. Spiritual direction available.

### Camp Forest Springs

Westboro, WI

Phone: 715-427-5241

<http://www.campforestsprings.org>

Both modern and rustic cabins. Call for special rate for pastors.

### Catholic, Ecumenical, Episcopal Retreat Centers:

<http://www.retreatfinder.com/directory/Faith/Christian.aspx>

Our liturgical friends have a much longer and stronger history of retreating with God. There are MANY monasteries and retreat centers available. Some have hermitages set aside (cabins for personal retreat). Others have small "cells" / single rooms, some have dorm style accommodations, many have libraries and other common areas available for use. Some invite guests to participate in worship services, "praying the hours" or in silence. Some have spiritual directors available. Many have meals available. This web site lists over 1,000 retreat centers. Costs & accommodations vary.

### Diamond T Ranch

5361 River Rd o Clark Fork, Idaho 83811

Phone 208.266.0490 or 970.663.4183

<http://www.diamondtranch.com>

E-mail: [diamondt@netscape.com](mailto:diamondt@netscape.com)

A beautiful ranch in the Cabinet Gorge of Idaho that rents pastor's & families cabins for a significant discount (ask for the "Shepherd's Rest Rate"). 120 miles from Spokane, WA. Fish, hike, bike, ride horses (outfitters nearby), hunt, snowshoe, snowmobile.

"Gather eggs or throw hay with the Wagoners to taste ranch life, or peddleboat on the large, spring fed pond. Sit around the campfire, sing, laugh and tell stories, or look at more stars than you've ever seen in your life."

### Eagle Mountain Lodge

HC 71 BOX 23A

EAGLE NEST, NM 87718

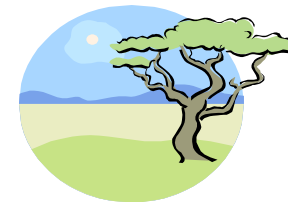
(575) 377-3682

Fax (575) 377-1390

[eaglemnt@afweb.com](mailto:eaglemnt@afweb.com)

<http://www.eaglemountainlodge.com>

Call for a special rate for pastoral couples. At 8,400 ft. elevation, Eagle Mountain Lodge has panoramic views. The 5,400 sq. ft. lodge facility with it's massive rock fireplace, log walls, rock & wood floors, picture windows, exercise room, sauna, hot tub, & video room is a place to rest & restore the body and soul. Each suite has a mini-kitchen with refrigerator, microwave, & cooking utensils. The towns of Red River, Taos, Angel Fire, Eagle Nest, & Santa Fe are a few miles away from the lodge.



#### Fairhaven Ministries

2198 Roaring Creek Road, Roan Mountain TN 37687

Phone: 423-772-4269 FAX: 423-772-0017

e-mail: fhmin@aol.com

<http://www.fairhavenministries.net>

A Retreat and Counseling Center for Christian Workers, located in the Blue Ridge Mountains of East Tennessee. Individual chalets and cottages plus a lodge are situated on 100 acres. Designed to accommodate personal retreats, personal or marriage counseling. Reduced rates available to full time ministry personnel or missionaries. Rates for pastors: \$50 per night for Chalets / cottages, \$40 for lodge apartments. Counseling: \$40 per hour.

#### Fairhaven Canada

near Vernon, British Columbia

<http://www.fairhavenministries.org>

Rates (in Canadian dollars -cabins can sleep 6): \$70 per night .

#### Faith Mountain

Rosedale, WV 26636

Phone and Fax: (304) 364.4019

Email: [faithmtn@mountain.net](mailto:faithmtn@mountain.net)

<http://www.faithmountain.org>

Faith Mountain is located in the Central Lakes Region of West Virginia. Includes 250 wooded acres, a four-bedroom cabin and three two-bedroom guest cottages. Special rates are available for full time Christian workers, and scholarships are available for those with limited funds and an immediate need for a get away or counseling.

#### Genesee Home

(530) 284-1082

7202 Genesee Road, Taylorsville, CA 95983

<http://www.geneseehome.org>

Pastor's Retreat Center. A renovated 1800s Victorian home (each couple has their own bed & bath) on a 1600 acre ranch in the Northern Sierra Mountains of California. Couples attend Sunday to Friday, \$495 per couple, all meals included, scholarships available.

#### Hidden Hollow Retreat Center

(704) 392-7594

[Info@RetreatCabin.com](mailto:Info@RetreatCabin.com)

[www.retreatcabin.com](http://www.retreatcabin.com)

Located in the heart of the Brushy Mountains near Wilkesboro, NC. The purpose of the Center is to provide Christians an affordable haven where personal ministry, retreat, renewed vision and quiet meditation would be the agenda of the day. The 50 mile views are breathtaking (located on a mountain top). Rates start at \$65 per night.

#### Hospitality Homes

<http://www.hospitalityhomes.org>

Individuals who open their homes for pastors and families to get away. This could be a spare bedroom, an "in-law" apartment, or a vacation home. Locations all across the country. A donation is requested when you make a reservation through this organization.

Phone/Fax: 209-966-2988

Write: PO Box 415, Mariposa, CA 95338

Inn at Bethany  
Meadows of Dan, VA  
<http://www.innatbethany.org>  
Bethany House Ministries exists for the support of those in full time ministry by providing a peaceful setting for rest and renewal. Cabins are \$25 a night.

Ministries Resource Center  
14190 Barker Hollow Road  
Woodman, WI 53827  
<http://www.ministriesresourcecenter.org/>  
608-988-4649 or 608-988-4326  
A retreat center especially for those in ministry who are in need of rest, in a beautiful natural setting. A three story chalet, with 4 units including kitchen and decks, located near Prairie du Chien, WI. Suggested prices per day ("pay what you can" policy): Daylight Getaway: \$10. Overnight for one: \$25, Couple: \$30, Family: \$35.



Mountain Top Retreat  
Bozeman, MT 59718  
1-406-763-4566  
[info@mountaintopretreat.org](mailto:info@mountaintopretreat.org)  
[www.mountaintopretreat.org](http://www.mountaintopretreat.org)  
Located south of Bozeman, Montana bordering the Gallatin National Forest. Founded in 1988, Mountain Top Retreat has six houses available to both ministers

and lay people, where they can find solace, the peace of God, and renewal. A lodge provides recreational facilities and a place to meet and converse, read, relax, or talk with a pastor on staff. Numerous paths and open space provide an excellent setting for devotions as well as the opportunity to explore the beauty of God's creation. Pastor's rates start at: \$80 per night for a cabin (for a family of up to 4); \$420 for a week.

Pastor's Retreat Network:  
[www.pastorsretreatnetwork.org](http://www.pastorsretreatnetwork.org)  
1-866-703-9544

Week long retreats for full-time pastors and spouse. Includes all meals, in a "Bed & Breakfast" type of setting (private room and bath). One meal each day is eaten with other pastoral couples retreating the same week. Great for rest, prayer, and reconnecting with spouse. Spiritual Sabbath reading material available.

Retreats run from Sunday p.m. through Friday a.m..  
COST: \$495 a week per couple. Scholarships available.  
LOCATIONS:

Cedarly - in Delafield, Wisconsin, on Upper Nemahbim Lake, about 30 miles west of Milwaukee. Fishing, canoeing, and cross-country skiing available.  
Valley View Inn - New Bedford, Ohio, in "Amish Country." A 90 minute drive from either Cleveland or Columbus.

Selah Inn at the Ranch -Mt. Vernon, Texas, in the rolling pasturelands and lush woods of East Texas.

### Pacem in Terris

<http://www.paceminterris.org>

Pacem In Terris

St. Francis, MN (near Anoka, north of the Twin Cities)

Phone: 763.444.6408

A "hermitage retreat center", Pacem in Terris has 16 "hermitages" (small cottages for one person) located on their grounds. This is a place of solitude and quiet. Simple foods (cheese, homemade bread, fruit) are left in a basket for your meals. The evening meal can be taken in the Community House with others, if desired (this is not in silence). Each hermitage contains a bed, bible, rocking chair (looking out through a large window into the woods), a small table, a screened in porch, and a wardrobe. There is no electricity or plumbing, but each hermitage has gas wall heaters for winter, and gas burners to make coffee or tea. Outouses are located centrally, and the Community House has bathrooms and showers, available 8 a.m. - 8 p.m. Requested donation: \$90 / night.

### Pastor's condos

<http://www.pastorcondo.com>

Condos available in

Kona, Hawaii &

Branson, MO., with a special price for pastors (\$625 for a week in Hawaii [2 bedrooms], \$725 for Branson [3 bedrooms]).



### St. Paul's Monastery

2675 Larpenteur Avenue East

St. Paul, MN 55109-5097

telephone 651-777-8181

<http://www.stpaulsmonastery.org>

Benedictine Women's Monastery

Personal retreats include a private room and all meals, \$75 per 24 hour day (spiritual direction is also available for an additional cost).

### Sonscape Retreat

[www.sonscape.org](http://www.sonscape.org)

1502 County Road 25, Divide, CO

(888) 766-7227

SonScape Retreats' primary focus is deepening the spiritual, emotional and family health of those in ministry. Mornings are spent in personal silence, solitude and meditation before God, followed by pointed and meaningful group teachings focused around ministry issues and spiritual formation. Afternoons are free for rest, recreation, a drive in the mountains or shopping in one of our quaint little towns. Evenings provide time for personal reflection or group interaction and fun. The week also includes three individual sessions with retreat leaders for personal concerns and issues. Retreats consist of 4-5 couples and/or singles. Retreat leaders remain available to guests after the retreat ends. Books, notes, phone calls and, when possible, face-to-face visits encourage guests to stay the course. Cost: Sliding scale, with scholarships available.

TLC Retreats  
Wolfeboro, NH 03894  
Phone: 603-569-4004  
<http://www.tlcretreats.org>  
[info@tlcretreats.org](mailto:info@tlcretreats.org)



TLC Retreats are offered to couples in full-time ministry to enable them to hear and reaffirm afresh God's promises for rest in His presence. Cost of \$200 per couple includes meals and 4 days and 3 nights accommodations on Lake Winnepesaukee in Wolfeboro, New Hampshire.

Westwood Ministries  
Kerrville, TX  
Phone: (830) 634-3082  
<http://www.westwoodministries.org>  
Offers a place for rest and sabbatical one hour north of San Antonio, in the beautiful Texas hill country. Cost: \$45 per day, monthly rates available. \$40 per counseling session also available. Horseback riding, swimming, canoeing, tubing (some with extra cost) also available.

The Wilderness Fellowship Ministries  
Fredric, WI  
715-327-8564  
[www.wildernessfellowship.com](http://www.wildernessfellowship.com)  
This place has personal prayer cabins available to rent. Suggested minimum donation: \$45 a night (however, there's a disclaimer that if people cannot afford that amount, they should still come).

## **PERSONAL RESOURCES for Pastors:**

Focus on the Family:

<http://www.parsonage.org>

<http://www.fotf.ca/clergycare>

Focus on the Family's websites especially for pastors and their families. Includes: retreat centers & counseling centers, and a "Pastoral Care Directory" .

PastorCare Networking Organization

[www.pastorcare.org](http://www.pastorcare.org)

A networking organization that will help a pastor find a counselor, retreat center, Christian healthcare professional, lawyer who is willing to do work for a discount or free.

Pastoral Care Inc.

<http://pastoralcareinc.com>

"Our goal is to strengthen and encourage our leaders in ministry." Legal counsel, skilled labor, equipment, prayer, financial assistance, and more. All free.

<http://www.pastors.com>

Rick Warren's website for pastors includes free sermons, articles, and curriculum.

## **SABBATICAL GRANTS for Pastors:**

The Louisville Institute: Eight to twelve week sabbatical grants (\$10,000 - \$15,000) available to pastors, through an application process, including a proposed outline for what you will use the sabbatical for. Applications due in September. (502) 992-5431  
[www.louisville-institute.org](http://www.louisville-institute.org)

The Lilly Endowment: Up to 120 grants of up to \$45,000 each given annually for pastoral renewal. Grant proposals due in May. A Master of Divinity degree is required to apply. Most grant proposals are for 3-4 months. More information is available at: [www.clergyrenewal.org](http://www.clergyrenewal.org) OR [www.lillyendowment.org](http://www.lillyendowment.org)

## **For Pastor's Spouses:**

Beth Nuah Ministries House of Rest  
Provides free 3 day retreats for pastor's wives (sorry, pastor's husbands, not for you!)  
<http://www.bethnuahministries.com>

Online resources:

<http://priscillasfriends.org>

<http://www.fotf.ca/clergycare>

<http://www.sarahstent.com/pwnet/PWNetwork4.htm>

<http://pastorswife.com>

<http://www.gpwn.tv>

<http://www.pastorswife.net>

[www.justbetweenus.org](http://www.justbetweenus.org)

<http://www.pastorsspouses.com>

Find something that needs to be changed or added  
in this brochure? Please let me know -

-Pam Braman, fall 2010